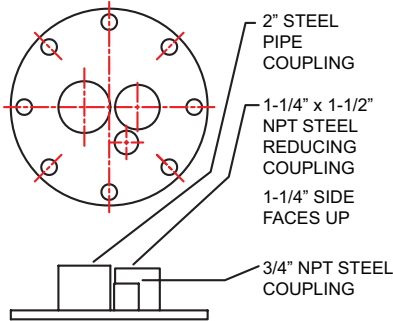


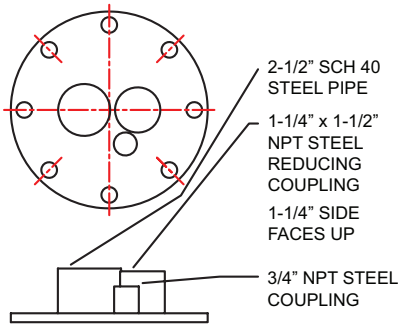
Steel Flanged Well Seal

WHY A STEEL FLANGED SEAL?

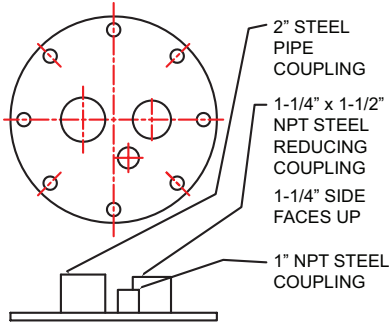
Steel seals are the most reliable, durable and easiest to install. Compression seals at installation must be aligned within close tolerances and can be more prone to wear than steel or HDPE seals. Blackhawk's steel seals are zinc coated to avoid rust.



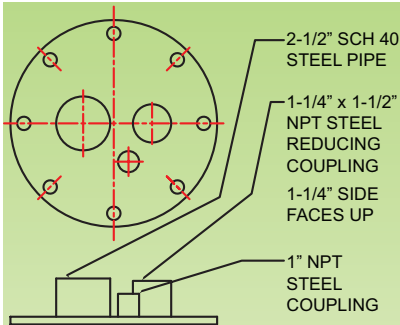
6-inch standard seal



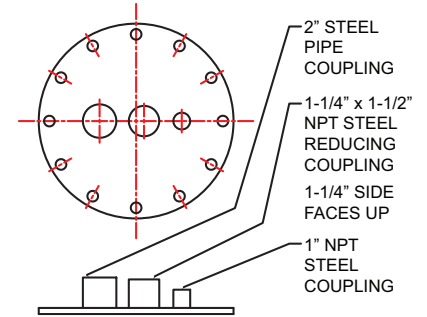
6-inch gas seal



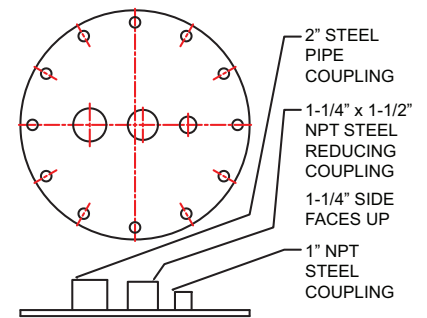
8-inch standard seal



8-inch gas seal



10-inch standard seal



12-inch standard seal



HOW TO INSTALL

Blackhawk steel-plated bolted connections are threaded for simple installation directly above the well. A threaded pipe nipple encases the drive rod and securely connects the driver with the downhole components.

Technical Data

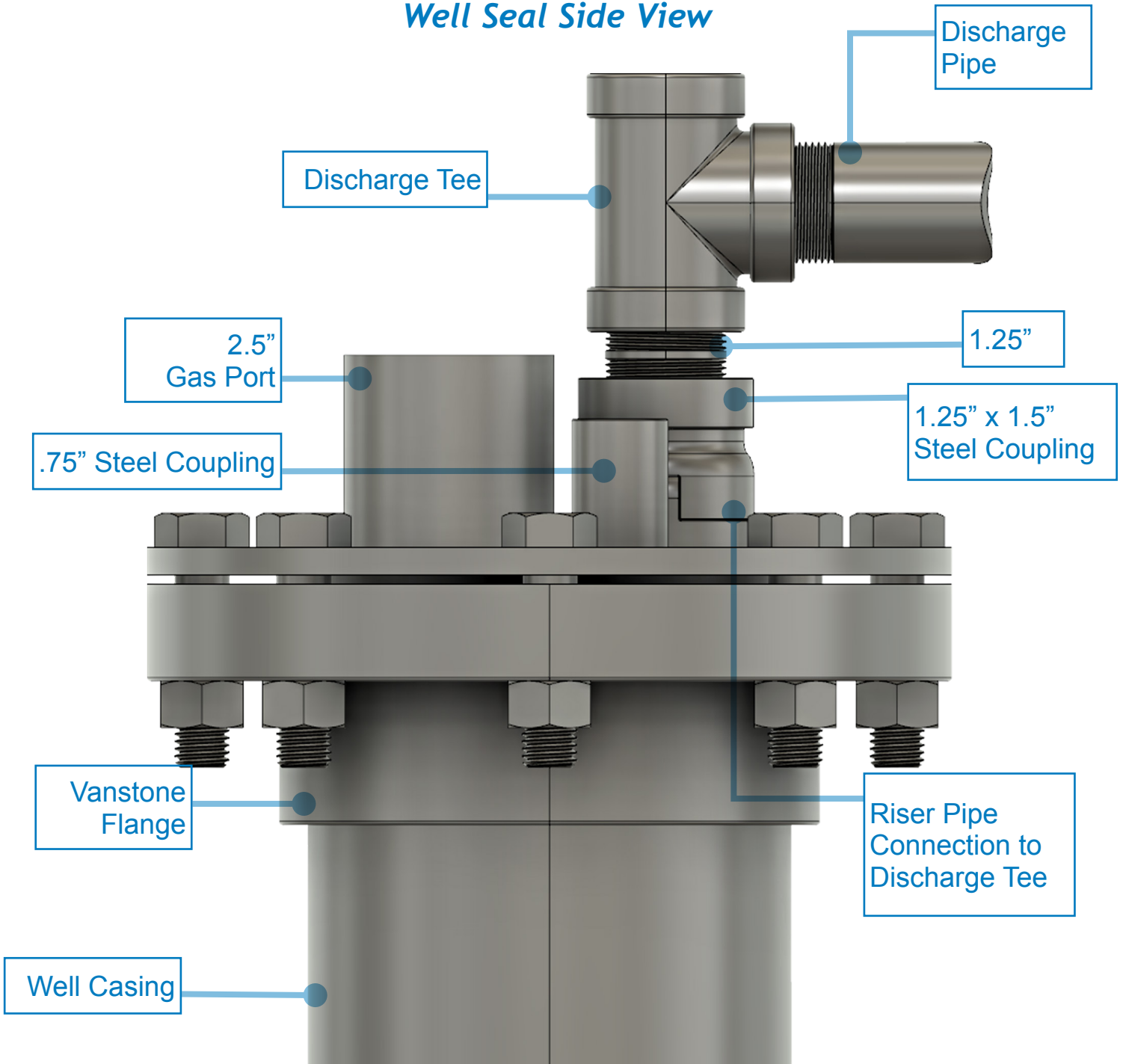
Materials of construction	Zinc coated plate steel
Available sizes (in inches)	6, 8, 10 and 12
Pipe nipple	2 in. for standard seals
Reducing coupling	1 1/4 x 1 1/2 in.; 1/4-in. side face up
Gas-head recovery sizes	6 & 8 in., with 2 1/2-in. pipe nipple



Standard zinc-plated steel well seal.

SEAL CONNECTION TO RISER PIPE

Well Seal Side View



Maximize your investment in Blackhawk pumps

The best-performing environmental pump in the business

